

DATE: September 22, 2011

TO: WCA Governing Board

FROM: Mark Stanley, Executive Officer

SUBJECT: Item 9: Consideration of a resolution approving the application for grant funds for the California River Parkways Grant Program under the Safe Drinking Water, Water Quality and Supply, Flood Control, River and Coastal Protection Bond Act of 2006 (Proposition 84) for the Duck Farm project.

RECOMMENDATION: The Watershed Conservation Authority authorizes staff to apply to the 2011/12 California River Parkways Grant Program, funded under the Water Bond Act of 2006 (Proposition 84) and administered by the Natural Resources Agency, in an amount up to \$1.4 million for the Duck Farm project to fund park features including riparian areas and interpretive stations.

BACKGROUND: The Natural Resources Agency announced the release of the Guidelines for the California River Parkways grant program. California voters passed the Safe Drinking Water, Water Quality and Supply, Flood Control, River and Coastal Protection Bond Act of 2006. It added to the Public Resources Code, Section 75050, authorizing the Legislature to appropriate the sum of sixty-two million dollars (\$62,000,000) to the Agency for the acquisition, restoration, protection and development of river parkways in accordance with the California River Parkways Act of 2004. This is the final round of the Prop 84 River Parkways Grant Program with \$30 million available for project awards. Grant funds will be awarded to public Agencies and California nonprofit organizations.

Eligible projects must involve natural creeks, streams and/or rivers, even if they flow only during the rainy season, or channelized or culverted creeks, streams and /or rivers. Projects must also meet at least two of the following five statutory conditions: Recreation; Habitat; Flood Management; Conversion to River Parkways; Conservation and Interpretive Enhancement. (See Exhibit A – Site Location Plan)

WCA staff proposes submitting an application for the Duck Farm's 1) riparian areas: bioswale, dry streambed, upland and tree canopy plantings and 2) interpretive panels and kiosk stations, along the 1.25 miles of interior the trail loop and at river overlook, highlighting the subjects of green energy, native plants, watershed and natural processes; along with water conservation and supply. The project and proposed features to be funded from the grant fits within three of the five required statutory conditions: Recreation; Habitat & Conservation and Interpretive Enhancement as outlined in the guidelines and application for the River Parkways program. (Exhibit B1 – Riparian Area Plan and B2 – Interpretive station location plan)

If approved, staff will submit an application before October 14, 2011. Applications shall be evaluated and site visits may be scheduled in the spring of 2012, with final

funding decisions determined and announce in the months following – an exact award date is not available at this time.

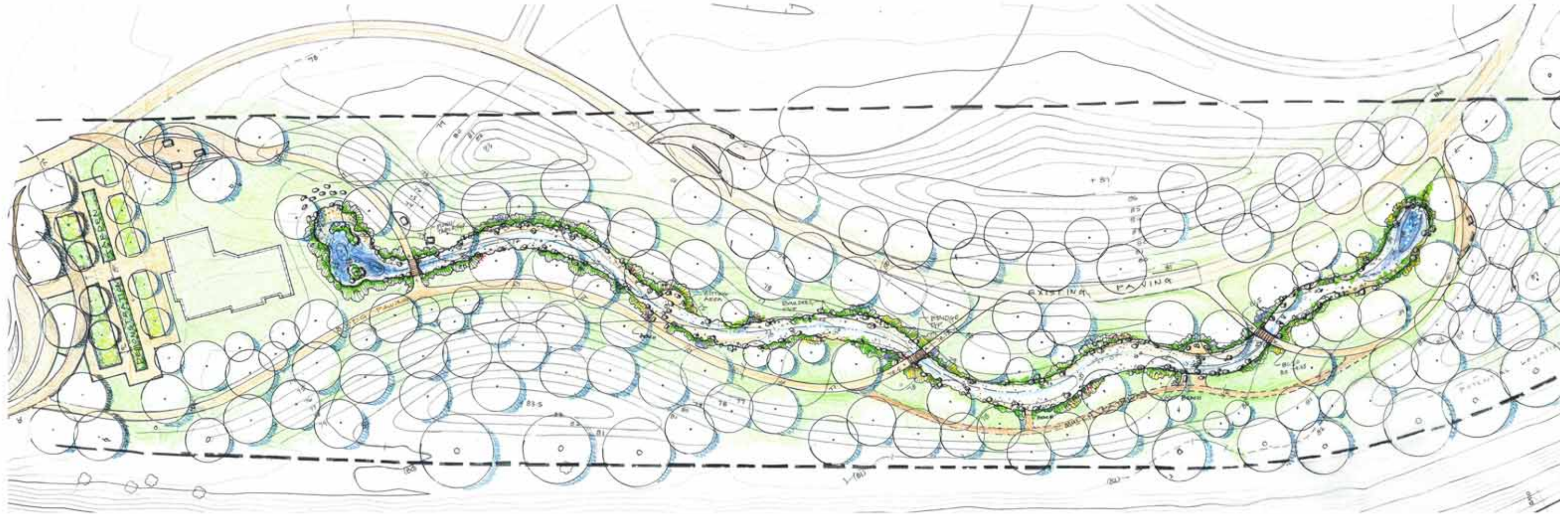
FISCAL INFORMATION: The schedule for proposed projects must provide for project completion with all funds being expended by June 30, 2016. There is no minimum or maximum grant award amount. In Exhibit C, Funding Summary – Duck Farm Phase 1A the details for the full development of Phase 1A. The project and proposed features to be funded from the grant fits within three of the five required statutory conditions: Recreation; Habitat & Conservation and Interpretive Enhancement as outlined in the guidelines and application for the River Parkways program. WCA staff will determine which of the statutory conditions and mix of park features and their respective scope of work and budget, valued between \$900k – \$1.4M, for development that will ensure the most competitive grant application possible to be considered for funding.

Watershed Conservation Authority Projects



Acquisitions		Status	Planning		Status
Map #	Project Name		Map #	Project Name	
2	Bellflower Riverview Park Acquisition	Completed	1	98th Street Park Development	In Progress
N/A**	Chapter 8 Tax Default Properties Acquisition	In Progress	3	Citrus Heights Bike Stop Development*	Awaiting Funding
3	Citrus Heights Bike Stop Development*	Completed	N/A**	Development of Procedures for Project Funding Criteria	Completed
4	Duck Farm River Parkway Development*	Completed	4	Duck Farm River Parkway Development*	In Progress
6	Emerald Necklace San Jose Creek Acquisition	Funded	5	Emerald Necklace Feasibility Study Implementation Plan	In Progress
7	Parque dos Rios 'South Gate**'	Completed	N/A**	Green Visions Plan	Completed
8	River Wilderness Park (Open to the Public)*	Completed	N/A**	Integrated Regional Water Management Plan	Completed
12	Walnut Creek Habitat and Open Space*	Completed	7	Parque dos Rios 'South Gate**'	Completed
Development / Construction			8	River Wilderness Park (Open to the Public)*	In Progress
Map #	Project Name	Status	N/A**	Rivers and Tributary Access Improvements	Completed
1	98th Street Park Development	Awaiting Funding	N/A**	RMC Trail & Recreational Opportunities Plan	Completed
3	Citrus Heights Bike Stop Development*	Awaiting Funding	9	San Gabriel River Confluence with Cattle Canyon Improvements	In Progress
4	Duck Farm River Parkway Development*	In Progress	10	San Gabriel River Discovery Center Development	In Progress
7	Parque dos Rios 'South Gate**'	Funded	N/A**	Upper San Gabriel and Rio Hondo Watershed Coordinator	In Progress
8	River Wilderness Park (Open to the Public)*	Funded	N/A**	Urban, Mountains, and River Parkway Capital Projects	In Progress
9	San Gabriel River Confluence with Cattle Canyon Improvements	In Progress	12	Walnut Creek Habitat and Open Space Project*	In Progress
10	San Gabriel River Discovery Center Development	Awaiting Funding	13	Whittier Narrows Recreation Area Master Development Plan Input	Completed
11	Santa Fe Dam Bike Crossing Improvements	Awaiting Funding	* Properties Owned by the Watershed Conservation Authority **Territory Wide Project		
12	Walnut Creek Habitat and Open Space*	Awaiting Funding			

Proposed Riparian and Dry Streambed Bioswale



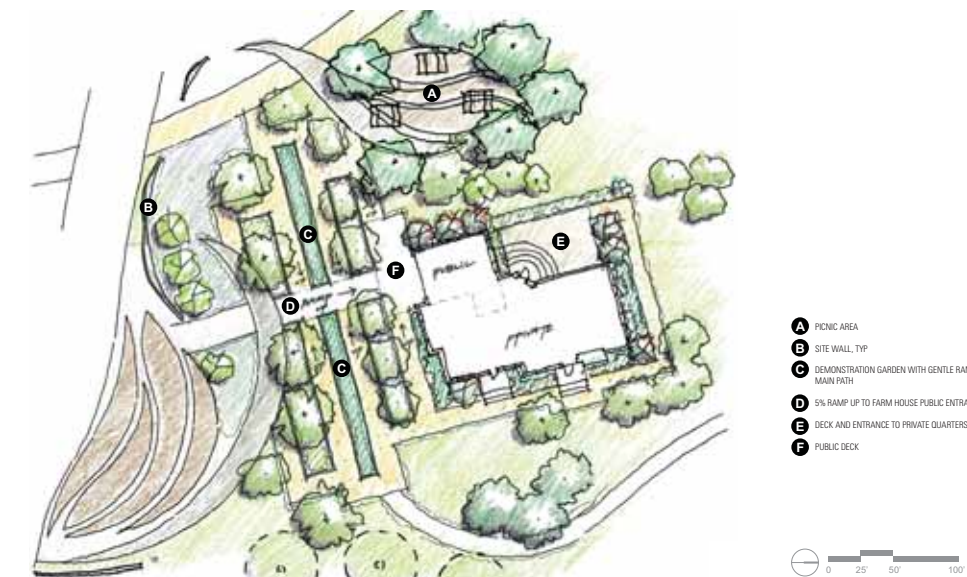
Proposed Farm House Relo and Demo Garden

RIVER PARKWAY GRANT APPLICATION - PENDING

- Riparian dry stream and bioswale, outdoor classroom, trail and seating area \$905K
- Interpretive kiosks and seating areas \$280K
- Demonstration Garden \$180K

TBD FUNDING SOURCE - PENDING

- Main Duck Farm House Relocation and Renovation \$355K
- Iconic Interpretive Hardscape Circles at SCE tower Locations \$1.5M
- SCE fee property improvements and Relocation of Distribution line feeding Caltans Ramp Meter Signal \$295K



Funding Summary - DUCK FARM PHASE 1A

Deliverables	SECURED FUNDING					PENDING FUNDING SOURCE		Phase 1A Grand Total
	RMC	SEP	Prop A	EEMP	LACFCD	River Parkway Grant Application	TBD Scope Pending Funding	
Item								
1 Demolition and Prep	\$567,287							\$567,287
2 Pocket Park and Entry	\$338,506		\$65,396					\$403,902
3 East Tunnel Entry Plaza and Parking Area	\$515,228		\$39,881					\$555,109
4 Tunnel Pedestrian Interior Improvements	\$199,355							\$199,355
5 West Park Entry Plaza and Demonstration Garden	\$568,858							\$568,858
5A Demonstration Garden						\$180,000		\$180,000
6 Water Source/Fire Protection	\$147,054							\$147,054
7 Infrastructure (Site Demo/Prep/Irrigation/1.5 mile Trail Loop)	\$1,353,681		\$23,467	\$217,371				\$1,594,519
8 SEP Phytoremediation/Natives/Meadow/Wildflowers		\$373,723						\$373,723
9 Riparian dry stream/bioswale, trail, outdoor classroom						\$905,000		\$905,000
9A Tree Canopy / Freeway Berm and Tree Buffer				\$229,125				\$229,125
10 River Overlook					\$280,000			\$280,000
11 Interpretive Graphic Kiosks and seating areas	\$50,000					\$280,000		\$330,000
12 Iconic Interpretive Circle Hardscape Features at SCE Towers							\$1,533,080	\$1,533,080
13 Main Duck Farm House Renovation/Relocation							\$355,000	\$355,000
Sub-total Hardcost	\$3,739,969	\$373,723	\$128,744	\$446,496	\$280,000	\$1,365,000	\$1,888,080	\$8,222,012
Design AECOM	\$901,121	\$63,695						\$964,816
A/E Construction Oversight	\$113,254							\$113,254
WCA Services/Other	\$418,078	\$6,601	\$18,733					\$443,412
Construction Management	\$170,601							\$170,601
Permitting Process AECOM Support	\$87,705							\$87,705
Permit Plan Checks/Process (Allowance)	\$160,272	\$1,293						\$161,565
Sub-total Softcost	\$1,851,031	\$71,589	\$18,733	\$0	\$0	\$0	\$0	\$1,941,353
Total	\$5,591,000	\$445,312	\$147,477	\$446,496	\$280,000	\$1,365,000	\$1,888,080	\$10,163,365
<i>Lessee Relocation Cost</i>	\$75,000							\$75,000
<i>LA County DPW Land Transfer (TBD)</i>	\$50,000							\$50,000
<i>SCE Tower Climb Guards</i>	\$64,000							\$64,000
<i>SCE Fee Property Improvement</i>	\$20,000						\$85,000	\$105,000
<i>Underground Electrical Service Lines</i>							\$209,902	\$209,902
Sub-total Other Expense	\$209,000	\$0	\$0	\$0	\$0	\$0	\$294,902	\$503,902
Duck Farm Phase 1A Grand Total	\$5,800,000	\$445,312	\$147,477	\$446,496	\$280,000	\$1,365,000	\$2,182,982	\$10,667,267
					\$7,119,285	PENDING	\$3,547,982	\$10,667,267

September 22, 2011 - Item 9

RESOLUTION NO. 2011-27

RESOLUTION OF THE WATERSHED CONSERVATION AUTHORITY APPROVING THE APPLICATION FOR GRANT FUNDS FOR THE CALIFORNIA RIVER PARKWAYS GRANT PROGRAM UNDER THE SAFE DRINKING WATER, WATER QUALITY AND SUPPLY, FLOOD CONTROL, RIVER AND COASTAL PROTECTION BOND ACT OF 2006 (PROPOSITION 84) FOR THE DUCK FARM PROJECT.

WHEREAS, The Watershed Conservation Authority has been established as a joint powers agency between the Rivers and Mountains Conservancy (RMC) and the Los Angeles County Flood Control District (District); and

WHEREAS, the Watershed Conservation Authority (WCA) has further been established to focus on projects which will provide open space, habitat restoration, and watershed improvement projects in both the San Gabriel and Lower Los Angeles Rivers watershed; and

WHEREAS, the WCA has a property that requires further funding for implementation of approved project plans; and

WHEREAS, the California River Parkways has a grant program that is currently open for competitive applications; and

WHEREAS, the Legislature and Governor of the State of California have provided funds for the program shown above; and

WHEREAS, the California Natural Resources Agency has been delegated the responsibility for the administration of this grant program, establishing necessary procedures; and

WHEREAS, said procedures established by the California Natural Resources Agency require a resolution certifying the approval of application by the Applicants governing board before submission of said application to the State; and

WHEREAS, the Applicant, if selected, will enter into an agreement with the State of California to carry out the project

WHEREAS, the proposed action is exempt from the provisions of the California Environmental Quality Act; NOW

Therefore be it resolved that the WCA hereby:

1. APPROVES the filing of an application for the Duck Farm Riparian project;
2. CERTIFIES that Applicant understands the assurances and certification in the application; and,
3. CERTIFIES that Applicant or title holder will have sufficient funds to operate

Resolution 2011-XX

and maintain the project consistent with the land tenure requirements; or will secure the resources to do so; and,

- 4. CERTIFIES that it will comply with all provisions of Section 1771.5 of the California Labor Code; and,
- 5. FINDS that the actions contemplated by this resolution are exempt from the environmental impact report requirements of the California Environmental Quality Act (CEQA), and,
- 6. CERTIFIES that the project will comply with any laws and regulations including, but not limited to, legal requirements for building codes, health and safety codes, disabled access laws, and, that prior to commencement of construction, all applicable permits will have been obtained; and,
- 7. CERTIFIES that applicant will work towards the State Planning Priorities intended to promote equity, strengthen the economy, protect the environment, and promote public health and safety as included in Government Code Section 65041.1, and
- 8. APPOINTS the WCA Executive Officer, or designee, as agent to conduct all negotiations, execute and submit all documents including, but not limited to applications, agreements, payment requests and so on, which may be necessary for the completion of the aforementioned project.
- 9. ADOPTS the staff report dated September 22, 2011.
- 10. AUTHORIZES the Executive Officer to apply for California River Parkways Grant funds for the Duck Farm.

~ End of Resolution ~

Ayes: _____ Nays: _____ Abstentions: _____

Passed and Adopted by the Board of the
WATERSHED CONSERVATION AUTHORITY
ON September 22, 2011.

Teresa Villegas, Chairperson

ATTEST: _____
Terry Fujimoto
Deputy Attorney General